

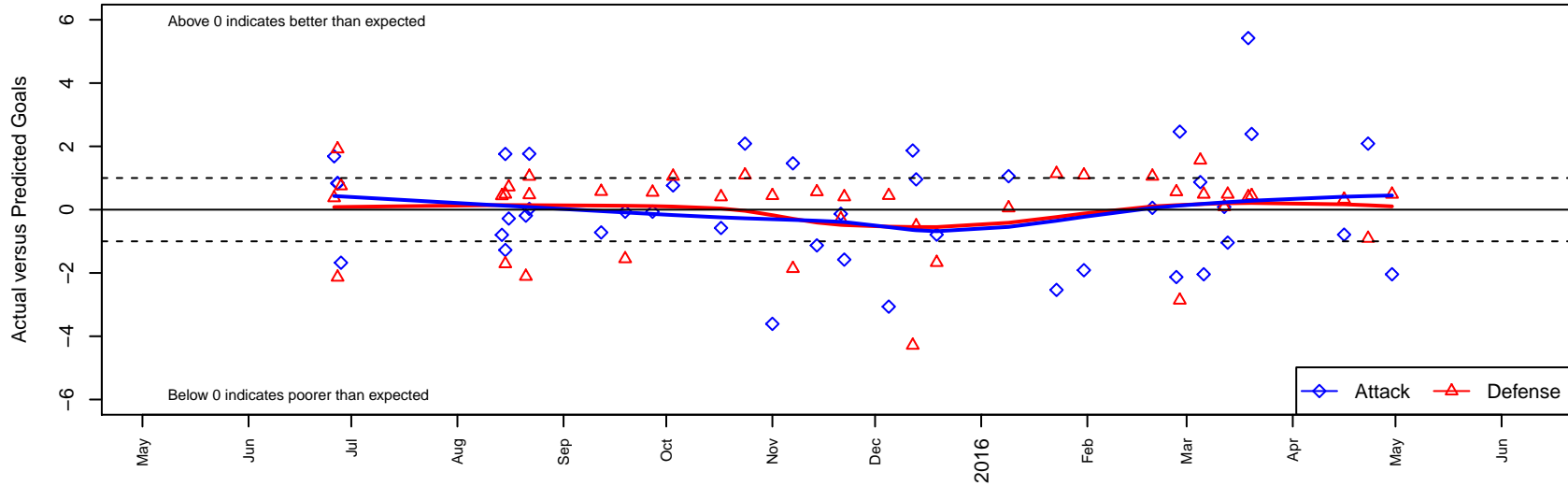
Washington Timbers Green B02

Washington Timbers
 Vancouver, WA
 B02 total strength=955
 attack=2.09 defense=1.4
 fall league = RCL B02 Div 4, RCL B02 7V2
 spr league = Win RCL B02 Div 4

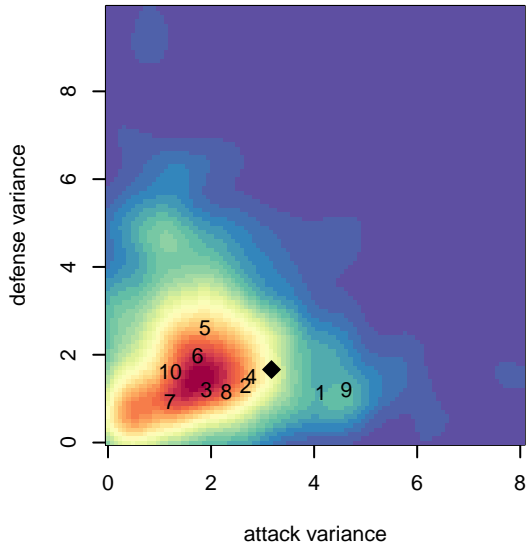
alt names used:
 WA Timbers B02 Green
 WASHINGTON TIMBERS B02 GREEN (WA)
 WTFC B02 Green
 WA Timbers B02 Green B
 WA Timbers B02 Green B
 WA Timbers B02 Green B
 WA Timbers B02 Green B

Venues played:
 2015 Clash At the Border Gold U13
 2015 Mt Hood Challenge U13
 2015 REDAPT Cup Silver U13
 2015 RCL B02 Div 4
 2015 RCL B02 7V2
 2015 Win RCL B02 Div 4
 2015 WYS Presidents Cup B02 Division 2

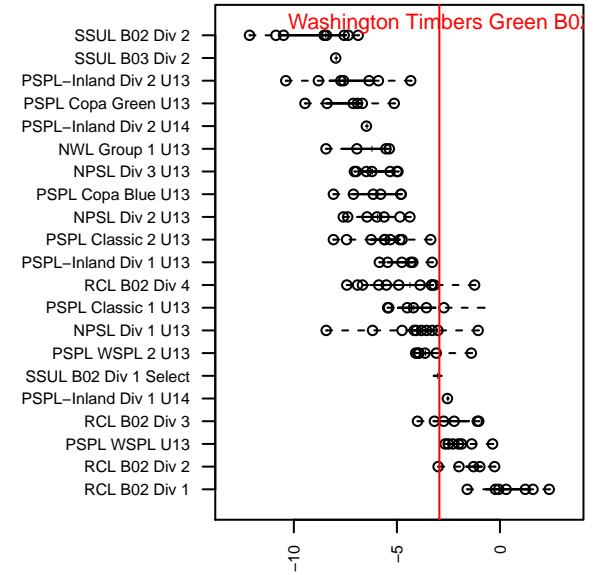
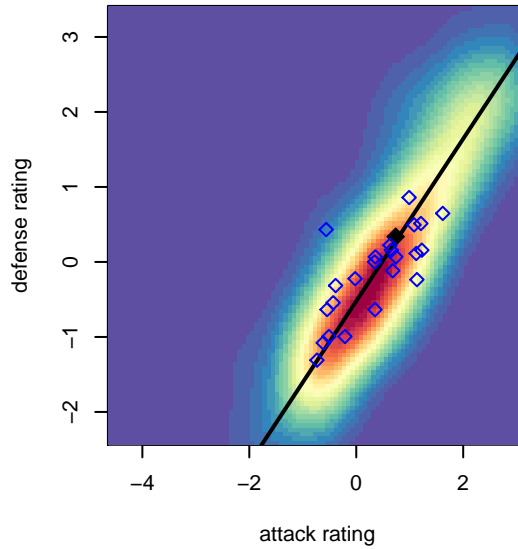
Washington Timbers Green B02
 Dots are actual minus expected GF (blue circles) and GA (red triangles).
 Blue line is smoothed change in attack strength. Red is smoothed change in defense strength.



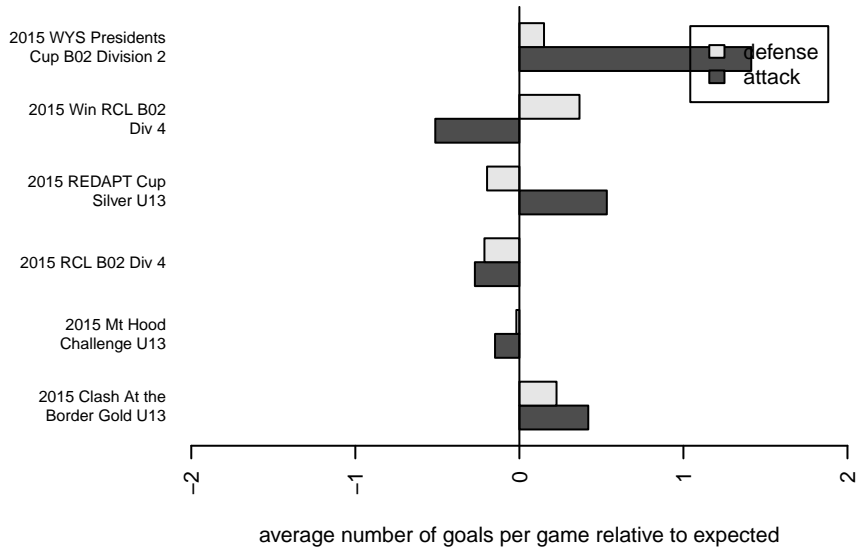
**attack and defense variance (black dot)
relative to other teams
and top 10 in region**



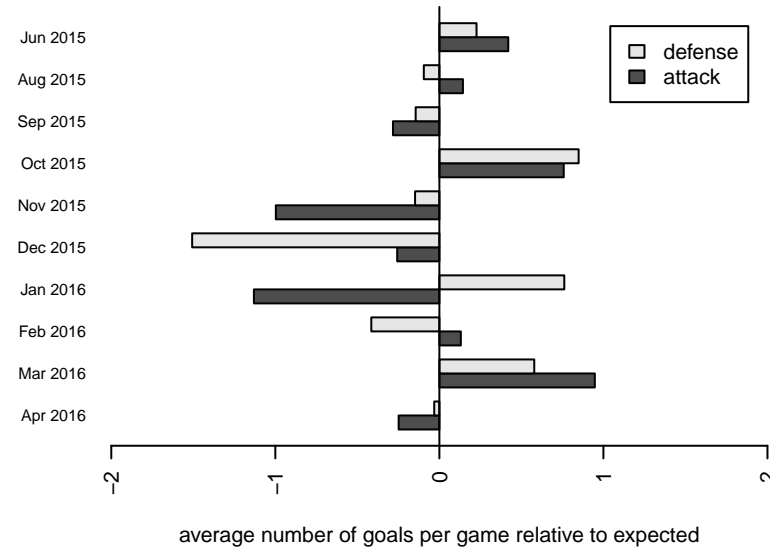
**attack and defense rating
relative to others at age
and all opponents in last 13 months**



Performance relative to 13 month average



Performance relative to 13 month average



date	home		away		venue	pred.home	pred.away
2016-04-30	Crossfire Yakima B02	1	Washington Timbers Green B02	0	2015 WYS Presidents Cup B02 Division 2	1.48	2.04
2016-04-23	Washington Timbers Green B02	4	Eastside FC Blue B02	2	2015 WYS Presidents Cup B02 Division 2	1.91	1.09
2016-04-16	Harbor Premier Green B02	1	Washington Timbers Green B02	1	2015 WYS Presidents Cup B02 Division 2	1.33	1.79
2016-03-20	Washington Timbers Green B02	8	Crossfire Premier D B02	0	2015 WYS Presidents Cup B02 Division 2	5.61	0.44
2016-03-19	Washington Timbers Green B02	12	Snohomish United Red B02	0	2015 WYS Presidents Cup B02 Division 2	6.58	0.40
2016-03-13	Washington Timbers Green B02	1	Crossfire Yakima B02	1	2015 Win RCL B02 Div 4	2.04	1.48
2016-03-12	Eastside FC Blue B02	1	Washington Timbers Green B02	2	2015 Win RCL B02 Div 4	1.09	1.91
2016-03-06	Crossfire Yakima B02	1	Washington Timbers Green B02	0	2015 Win RCL B02 Div 4	1.48	2.04
2016-03-05	PacNW White B02	0	Washington Timbers Green B02	3	2015 Win RCL B02 Div 4	1.56	2.13
2016-02-28	Washington Timbers Green B02	5	Blackhills FC Black B02	5	2015 Win RCL B02 Div 4	2.54	2.14
2016-02-27	Washington Timbers Green B02	0	PacNW White B02	1	2015 Win RCL B02 Div 4	2.13	1.56
2016-02-20	Washington Timbers Green B02	2	WPFC White B02	0	2015 Win RCL B02 Div 4	1.94	1.05
2016-01-31	Washington Timbers Green B02	0	Eastside FC Blue B02	0	2015 Win RCL B02 Div 4	1.91	1.09
2016-01-23	Blackhills FC Black B02	1	Washington Timbers Green B02	0	2015 Win RCL B02 Div 4	2.14	2.54
2016-01-09	WPFC White B02	1	Washington Timbers Green B02	3	2015 Win RCL B02 Div 4	1.05	1.94
2015-12-19	Harbor Premier Green B02	3	Washington Timbers Green B02	1	2015 RCL B02 7V2	1.33	1.79
2015-12-13	Crossfire Yakima B02	2	Washington Timbers Green B02	3	2015 RCL B02 Div 4	1.48	2.04
2015-12-12	Yakima Borges B02	8	Washington Timbers Green B02	3	2015 RCL B02 Div 4	3.71	1.13
2015-12-05	Washington Timbers Green B02	3	Eastside FC Grey B02	0	2015 RCL B02 Div 4	6.06	0.45
2015-11-22	Snohomish United Red B02	0	Washington Timbers Green B02	5	2015 RCL B02 Div 4	0.40	6.58
2015-11-21	Washington Timbers Green B02	1	Yakima Borges B02	4	2015 RCL B02 Div 4	1.13	3.71
2015-11-14	Washington Timbers Green B02	1	PacNW White B02	1	2015 RCL B02 Div 4	2.13	1.56
2015-11-07	Blackhills FC Black B02	4	Washington Timbers Green B02	4	2015 RCL B02 Div 4	2.14	2.54
2015-11-01	Crossfire Premier D B02	0	Washington Timbers Green B02	2	2015 RCL B02 Div 4	0.44	5.61
2015-10-24	Washington Timbers Green B02	4	Eastside FC Blue B02	0	2015 RCL B02 Div 4	1.91	1.09
2015-10-17	Washington Timbers Green B02	6	Snohomish United Red B02	0	2015 RCL B02 Div 4	6.58	0.40
2015-10-03	Washington Timbers Green B02	5	Whatcom Rangers Blue B02	0	2015 RCL B02 Div 4	4.23	1.05
2015-09-27	Washington Timbers Green B02	3	FWFC White B02	0	2015 RCL B02 Div 4	3.06	0.55

date	home		away		venue	pred.home	pred.away
2015-09-19	Eastside FC Grey B02	2	Washington Timbers Green B02	6	2015 RCL B02 Div 4	0.45	6.06
2015-09-12	WA Rush Nero B02	0	Washington Timbers Green B02	2	2015 RCL B02 Div 4	0.57	2.72
2015-08-22	Washington Timbers Green B02	4	Mercer Island FC Rugrats B02	0	2015 REDAPT Cup Silver U13	3.98	0.47
2015-08-22	Whatcom Rangers Blue B02	0	Washington Timbers Green B02	6	2015 REDAPT Cup Silver U13	1.05	4.23
2015-08-21	Washington Timbers Green B02	2	NPSA Titans White B02	3	2015 REDAPT Cup Silver U13	2.19	0.89
2015-08-16	Washington Timbers Green B02	2	Sting SC Arsenal B02	1	2015 Mt Hood Challenge U13	2.28	1.71
2015-08-15	Boise Nationals Dortmund B02	0	Washington Timbers Green B02	5	2015 Mt Hood Challenge U13	0.49	6.28
2015-08-15	Washington Timbers Green B02	3	Kent United Green B02	4	2015 Mt Hood Challenge U13	1.24	2.29
2015-08-14	Washington Timbers Green B02	1	FC Portland White B02	2	2015 Mt Hood Challenge U13	1.80	2.44
2015-06-28	Washington Timbers Green B02	0	PCU Red B02	1	2015 Clash At the Border Gold U13	1.68	1.75
2015-06-27	Washington Timbers Green B02	2	Academia Leon B02	0	2015 Clash At the Border Gold U13	1.15	1.92
2015-06-27	Seattle United Samba B02	4	Washington Timbers Green B02	2	2015 Clash At the Border Gold U13	1.86	1.18
2015-06-26	Washington Timbers Green B02	3	Abbotsford Storm 2003B	0	2015 Clash At the Border Gold U13	1.31	0.37